

THE FIRST GENERATION OF TRUE INSPECTION TECHNOLOGY

HANDHELD BACKSCATTER X-RAY IMAGER

PX SERIES



INDUSTRY LEADING IMAGE QUALITY

See through more material, and easily identify anomalies in more scenarios by leveraging our automated image enhancement algorithms, increased power, penetration mode, and vast suite of image filters.



UNPARALLELED SAFETY

Our patent pending revolutionary shielding protects operators from leakage and scatter radiation and exceeds all industry safety standards without compromising on image quality or device size and weight.



FASTER AND EASIER INSPECTIONS

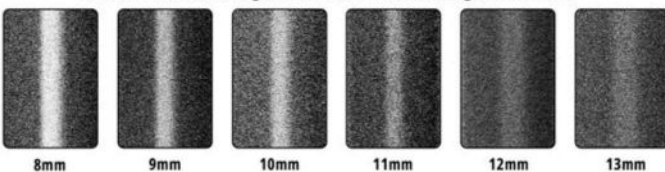
With a 7" ultra-bright touchscreen, intuitive software interface, extended battery life, and quick action buttons built into the handles operators can do inspections faster both indoors and outdoors without the need for additional accessories.



COMPACT AND LIGHT WEIGHT

Go anywhere, inspect hard to reach areas, and avoid operator fatigue with the smallest and lightest weight scanner on the market.

BX Steel Penetration of Organic behind Stainless Steel using PX Ultra Model



POWERFUL ADD ONS

MTP+

See even more with our high definition transmission panels capable of penetrating more than 25 mm of steel. Deploy in seconds, capture both BX and TX image at the same time, and scan areas traditional c-arms can't reach.

VISION RGD TABLET

Wireless secondary viewing station that allows other operators to view images in real time or browse previous images.

VISION COMMAND

Quick and easy cloud backup of all device images. View and interact with images on any device with a web browser.



YOU HAVE THE MISSION WE HAVE THE VISION

MODEL SPECIFICATIONS

	PX ULTRA	PX1	PX1 LITE
X-RAY SOURCE	160kV / 10W	140kV / 10W	120kV / 10W
STEEL PENETRATION	13 mm	11 mm	7 mm
WEIGHT*	5.1kg (11.2lbs)	4.6kg (10.2lbs)	
IMAGING	<ul style="list-style-type: none"> VISION 4.0 Auto Image Optimization Scenario specific scanning modes 10 Image enhancement filters Image compare & stitching 		<ul style="list-style-type: none"> VISION 4.0 Auto Image Optimization 5 Image enhancement filters Image compare & stitching
CAMERA	13MP Color Front Facing		None

*WEIGHT WITH BATTERY

COMMON SPECIFICATIONS

IMAGING & INSPECTION ADVANTAGES

- 7in High Resolution, 700Nit, Color Touchscreen
- Quick action buttons on handles
- Store up to 10,000 images
- Wireless & wired image transfer
- Configurable scanning speeds (3.75cm to 45cm per sec)
- 60 sec max scan
- Field of view alignment line lasers

SAFETY

- Revolutionary & patent pending built-in shielding
- Visual indicator lights and interlocks to prevent inadvertent X-ray emission
- Password required for operation
- Configurable Single/Dual Trigger Modes
- Front facing flashlight
- Contains no live radiation source

OPERATING CONDITIONS

- Ingress Protection: IP54
- Operating Temperature: -20 °C (-4 °F) to 60 °C (140 °F)
- Storage Temperature: -40 °C (-40 °F) to 70 °C (158 °F)

STANDARD ACCESSORIES

- Two (2) rechargeable batteries
- 1-Bay rapid charger
- Quick connect adjustable wrist & shoulder straps
- Data transfer cable
- Lockable transport case (IP67, MIL-SPEC, Airline carry-on)
- Quick start guide & operators manual

** Additional accessories available for purchase

SYSTEM

- Android operating system
- Wifi & Bluetooth
- USB
- Multi-language user interface
- 4G/5G Compatible with Hotspot*

*Hotspot / Cellular plan not provided by Videray.

TRANSPORT CASE OPTIONS

- Lockable hard case (IP67, MIL-SPEC, Airline carry-on)
- Lockable hard case with wheels (IP67, MIL-SPEC)
- Tactical backpack

SUPPORT

- Complementary OTA Software Updates
- Complimentary Email/Phone Support
- Complimentary Virtual Training
- On-site training Available
- Extended Warranty Available

COMPLIANCE

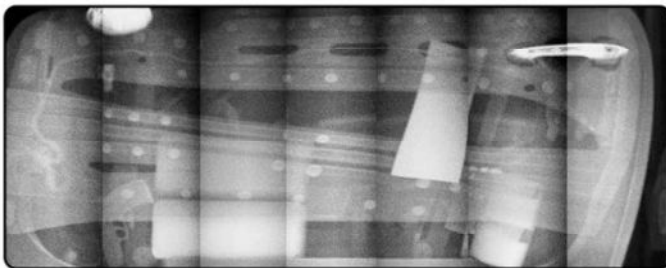
- CE compliant
- Compliant with all applicable U.S. Federal health and safety standards.
- ANSI, ICRP, NCRP and Euratom radiation safety standards for annual dose for general public

BATTERIES

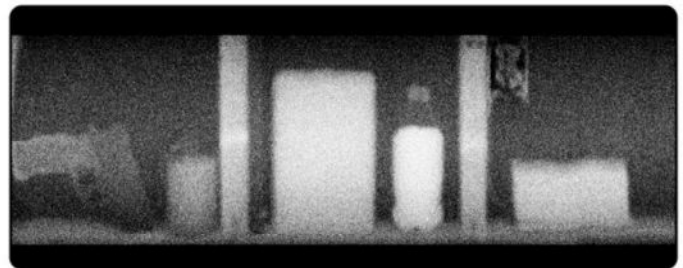
- 4-6 hrs battery life at typical duty cycles per battery
- 2 battery packs
- 110/220V AC 1-Bay Rapid charger

DIMENSIONS

- Length: 21.1 cm (8.3 in)
- Width: 28.2 cm (11.1 in)
- Height: 18.5 cm (7.3 in)



CAR DOOR - LEFT TO RIGHT: GUN, DRUGS, LEAD TRAP, LEAD WRAPPED DRUGS



WALL - LEFT TO RIGHT: GUN, EXPLOSIVES, DRUGS, LIQUID, LISTENING DEVICE AND CASH DETECTED



POINT SECURITY INC.
FIRST IN SECURITY SCREENING

www.pointsecurityinc.com

Point Security, Inc.
4264 Old Linwood Rd.
Lexington, NC 27292
1-800-476-1607