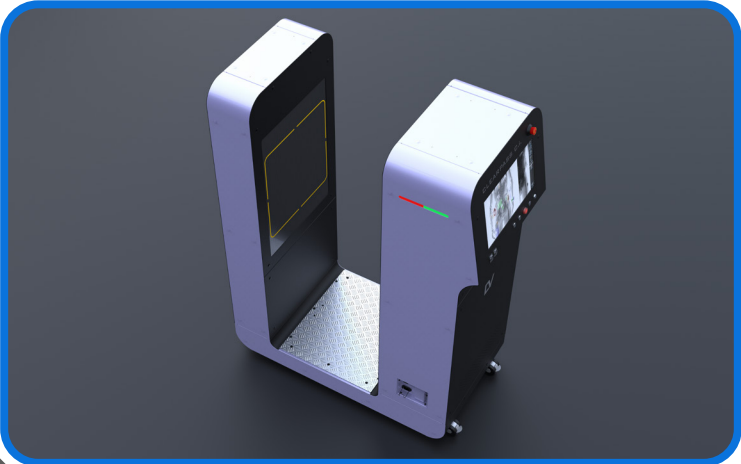
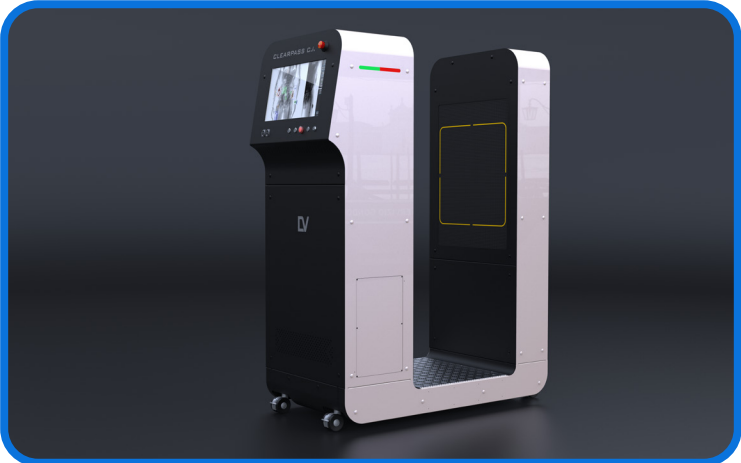


SINGLE-MODULE ANTI-VANDAL X-RAY SCANNING SYSTEM

CLEARPASS C.I.

COMPACT PARTIAL BODY SCANNING SYSTEM
COMBAT CONTRABAND | FULL BODY SCANNER



LINEV Systems US, Inc.
13631 Poplar Circle
Conroe, Texas 77304



info@linevsystems.com

Tech Support

844-989-6789

support@linevsystems.com

Sales Inquiries

936-588-2064

sales@linevsystems.com



www.linevsystems.com



CLEARPASS C.I. is a state of the art mobile, anti-theft/vandal X-ray scanning system. The mobile scanner is designed to pinpoint threats locally without exposing other parts of the body to radiation. Say goodbye to unnecessary full body radiation for body cavity inspections.

The standalone scanning system can be used for targeted body inspections without over exposing individuals to radiation. The scanner's ANSI 43.17-2009 image quality dose based limit makes sure of that.

The pinnacle of innovation and evolution, the compact body scanner boasts mobility which makes the inspection process easier regardless of location.

KEY FEATURES

- Safety Act certified
- The ONLY commercially available partial body scanner
- CJIS Ready
- Made in the US
- Ultra small footprint
- Superior image resolution
- 3-second scans
- Exceptional mobility

TOP BENEFITS

- 3-second scan time with low-dose radiation.
- Superior high medical quality imaging.
- Stationary scanning.
- Compact footprint and low height.
- Portable
- It places the burden of movement on the system.



WHAT TO LOOK FORWARD TO –

AUTOMATED SMART AI-POWERED SOLUTIONS

- NEW! Automatic selection of the minimum required X-Ray dose for the perfect image quality.
- Supports AI algorithms to automatically detect electronic devices, weapons and knives on / inside the human body.
- NEW! Cutting-edge solution for tracking operator's involvement in the screening process and screening performance.
- Automatic localization of the riskiest areas on the human body with further scanner self-configuration.
- DruGuard® - innovative technology for effective detection of drugs hidden inside the human body.

SPECIFICATIONS

PHYSICAL DIMENSIONS

| | |
|--------|------------|
| Length | 51.18 inch |
| Width | 25.5 inch |
| Height | 66.91 inch |
| Weight | 661.38 lbs |

OPERATIONAL PARAMETERS

| | |
|---------------------------------|---------------------------|
| Inspection Area | H 13.7 inch x W 19.6 inch |
| Min Inspection Height | 11.8 inch |
| Max Inspection Height | 51.81 inch |
| Wheel Based (With Wheel Locks) | Yes |
| Movable Parts During Inspection | No |
| Inspection Time | 3 Seconds |
| Installation Procedure | No Installation Required |

X-RAY PARAMETERS AND SAFETY

| | |
|--|------------|
| Anode Voltage | 160 kV |
| Anode Current | Up To 2 mA |
| Compatible with radiation protection requirements of ANSI/HPS N43.17-2009 for full body inspection systems (Part A) and for partial body inspection systems (Part B) | Yes |

IMAGE QUALITY

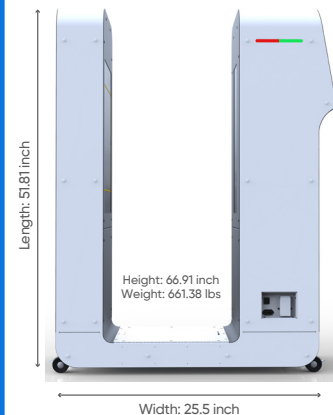
| | |
|--------------------------|-----------|
| Max Wire Resolution | 40 AWG |
| Max Steel Penetration | 1.41 inch |
| Min Spatial Resolution | 0.03 inch |
| Min Contrast Sensitivity | 1% |

ENVIRONMENT CONDITIONS

| | |
|-------------|------------------------------|
| Temperature | 0 – 40 °C |
| Humidity | Not More 90%, Non Conditions |

POWER SUPPLY

| | |
|-------------------|---------------------------|
| Power Input | 110 V/60 Hz (230 V/50 Hz) |
| Power Consumption | Not More 1.5 kVA |



APPLICATIONS

- Security checkpoints
- Military facilities
- Critical infrastructure
- VIP residences
- Government buildings
- Hotel complexes
- Traffic control
- Law enforcement
- Embassies and consulates
- Cruise ships
- Public events venues



LINEV Systems All rights reserved. The information in this document is proprietary to LINEV Systems. It may not be used, reproduced, disclosed or exported without the written approval of the LINEV Systems. As we develop our products, LINEV Systems reserves the right to alter the design and specifications at any moment without notice.