

# ADANI

## INNOVATIVE NEW PLATFORM FOR PEOPLE SCREENING



# CLEARPASS COMPACT

REVOLUTIONARY HIGH THROUGHPUT BODYSCANNER

**3-SECOND SCAN TIME**  
**SUPERIOR IMAGING**  
**STATIONARY SCANNING**



## THREAT AND CONTRABAND IDENTIFICATION

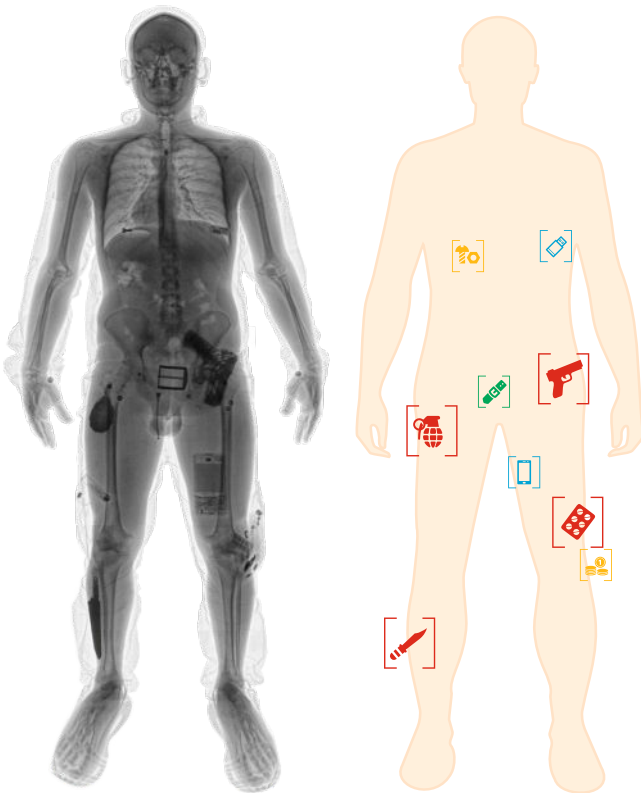
**SAFE • FAST • SMALL • CONVENIENT • UPGRADABLE**

With continual development of our products ADANI reserves the right to make changes to the design and specifications at any moment and without notice.

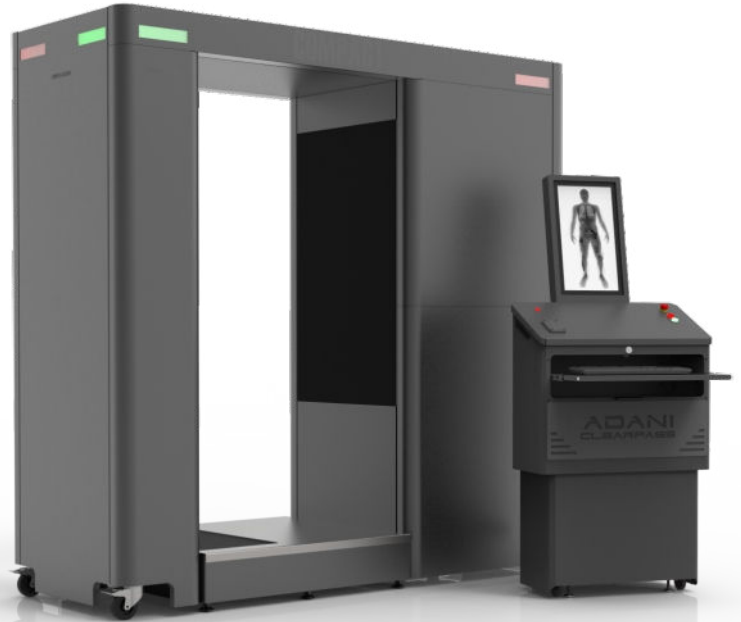
Dimensions:.....86" L x 33" W x 83" H  
 Scanning area.....72" x 22"  
 Workstation:.....22" W x 27" D  
 Monitor:.....24" HD  
 Power Requirements:.....120VAC/20A  
 Selectable Scan Settings:.....0.25 - 6.0 µSv  
 Generator type:.....Monoblock  
 Generator voltage:.....160kV  
 Detector configuration:.....C-Shaped  
 Wire detectability:.....40 AWG  
 Resolution:.....up to 5K

### RECOMMENDED OPTIONS

AI assisted Full Body Auto-detection  
 DruGuard Narcotics Detection Algorithm



**STANDARD IMAGE  
 NO ENHANCEMENT FILTERS**



### DETECTION THROUGH INTELLIGENCE AND MACHINE LEARNING

- Contraband / Threat identification
- Compliance, Privacy protection

### EASE OF USE

- Intuitive Operator Interface
- Person to be screened remains stationary
- Industry best image acquisition time
- Standalone or Integrated Operator's Workstation
- Compact footprint AND low height

0596-SA22032021

CLEARPASS is compliant with ANSI/HPS N 43.17 - 2009 standard. It also conforms to FDA radiation standards.

ADANI SYSTEMS, Inc.  
 13631 Poplar Circle  
 Conroe, TX 77304

## ADANI

5731 NW 151 ST  
 Miami Lakes,  
 FL 33014

[www.adanisystems.us](http://www.adanisystems.us)

Tel: 936-588-2064  
 Toll-free line: 844-989-6789  
[info@adanisystems.us](mailto:info@adanisystems.us)