

ADANI

X-RAY FULL BODY SECURITY SCREENING SYSTEM

NARCOTICS
IN BODY CAVITIES



WEAPONS



ELECTRONICS AND
MICRO CELL PHONES



CERAMIC
AND PLASTIC BLADES



EXPLOSIVES
AND LIQUIDS



PRECIOUS STONES
AND RARE METALS



COMPASS DV

TRUE DUAL VIEW FULL BODY SCANNER



USPAT# 9,576,219 B2
USPAT# 9,392,983 B2
USPAT# 7,397,892 B2

ADANI SYSTEMS, Inc.
www.adanisystems.us
info@adanisystems.com



See more
YouTube
Scan QR code

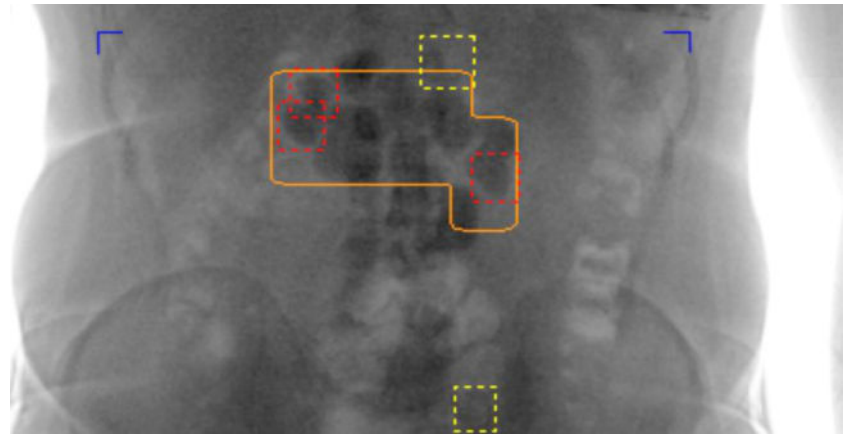
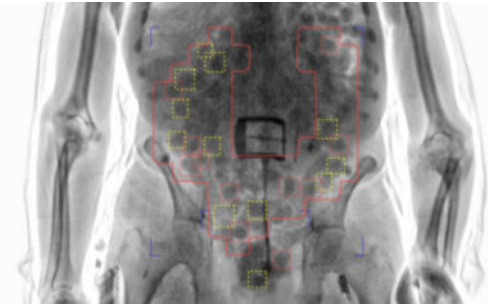
CIO TOP 10
APPLICATIONS MACHINE VISION &
IMAGING TECHNOLOGY
Solution Providers-2018



DRUGUARD™

Patented Automated Narcotics
Detection Assistance Software

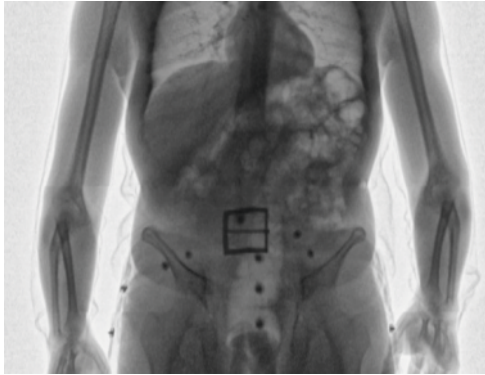
USPAT# 9,576,219 B2



DRUGUARD™ HIGHEST DETECTION RATE

HD images

Superior high quality images
for Full Body & Torso view



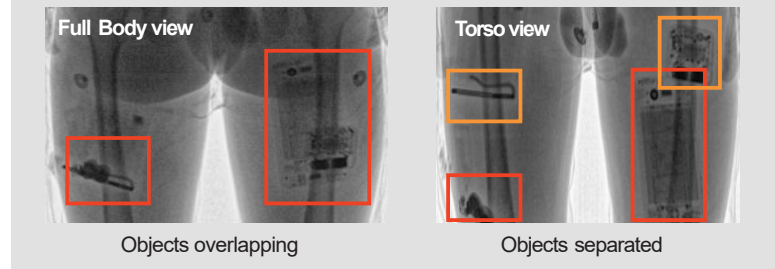
TRUE Dual View

COMPASSSDV is the only available patented TRUE DUAL VIEW X-ray Screening System configured with two independent X-ray generators/detectors arrays.

TRUEDUAL VIEW Patented Technology (USPAT # 9,392,983 B2)

- Stereotactic views
- Independent beam angles
- Individual dose settings

Both images produced from one scan



COMPASS XSC

The X-ray Shielding Cabin allows minimization of the safety zone around the scanner especially when used in confined spaces or crowded places. The X-ray protective glass and video surveillance system ensures the transparency of the scanner and scanning process.



COMPASSSDV conforms to requirements of FDA radiation standards under FFDCa and RCHSA, ANSI 43.17.2009 | ETL 5003466

Technical data

- | | |
|-----------------------------|---|
| • Scanning speed | Fully adjustable from 5 seconds |
| • X-ray dose per inspection | Dosimeter controlled 0.25 μ Sv (typical) |
| • Preset scanning modes | 9 configurable modes (Full Body & Torso view) |
| • Footprint | 43.7 sq.ft |

Options

- Data management system
- Fingerprint scanner, CCTV
- Barcode reader
- Passport reader
- Face camera
- Intercom system
- Touch screen

